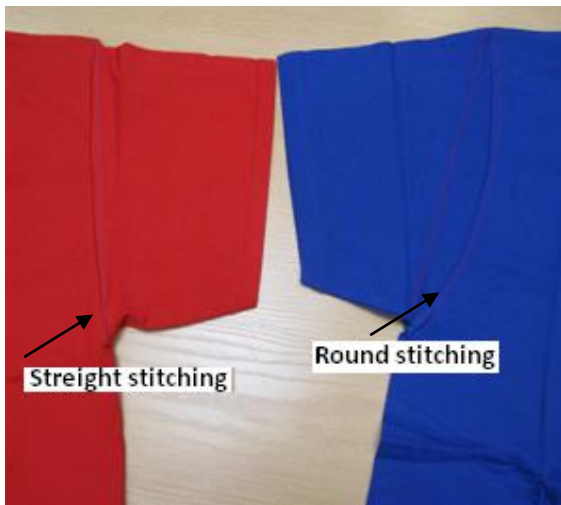


QUALITY OF T-SHIRTS

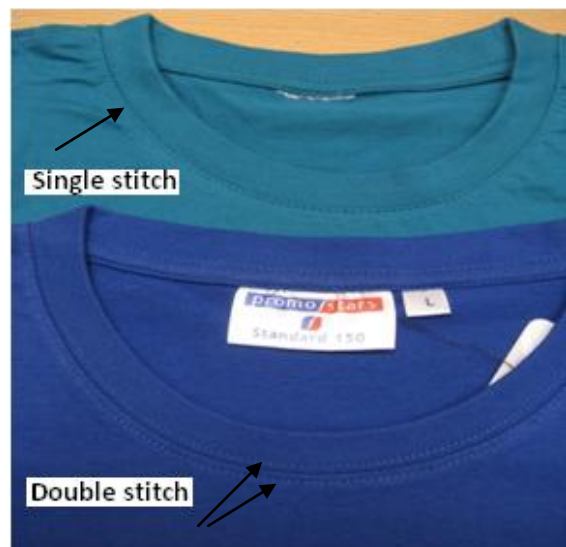


Weight is leading feature of t-shirt but not most important. Weight should be selected according to purpose of t-shirt. Weight is represented in grams per unit of fabric area. Generally it is grams per 1 square meter (*Promostars*). But... some of producers provide the weight in grams per meter, which is 1,5 square meter.



Next important feature is the way of sleeve sewing. On the left t-shirt is classic straight sewing. It is cheaper but it looks badly on a body. On the right side above you can see rounded sewing (*Promostars*), which ensures good body fitting.

Also important thing is stitching around the neck. On the photo below is comparison of single stitching and double stitching (*Promostars*). Double stitching is more durable and prevents wrinkling on the shoulders. Important thing is also stitch density. The higher stitch density, the greater durability.



QUALITY OF T-SHIRTS



There is a huge difference in neck finishing. Best way to keep shape of a t-shirt is to make the neckline as one element (*Promostars*). On clothing market there are available t-shirts with welts (necklines) made from two components. It is uncomfortable and looks unsightly. Also not without significance remains composition of welt. In all *Promostars* t-shirts there are elastic ribs. It has been achieved by addition Lycra® to our welts.



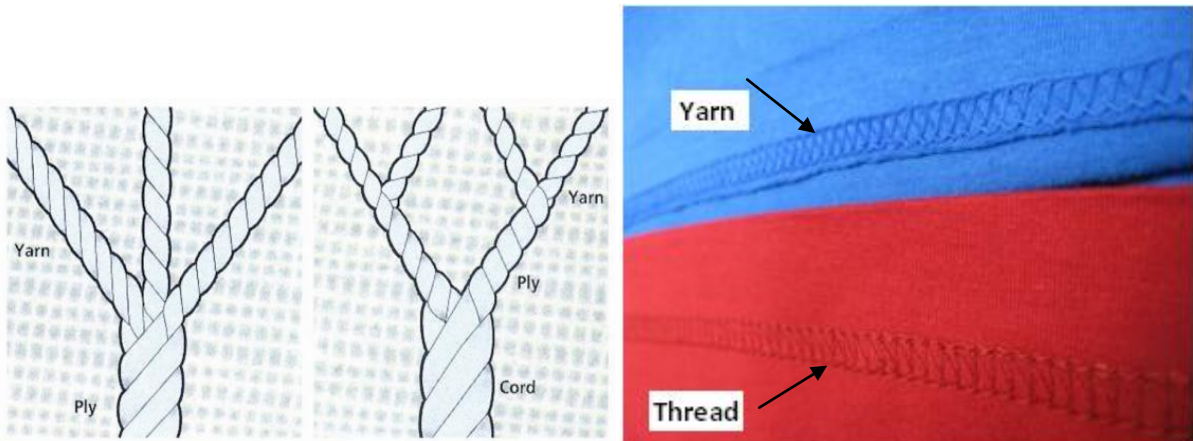
Strengthening tape just on neckline



Arm-to-arm strengthening tape (*Promostars*)

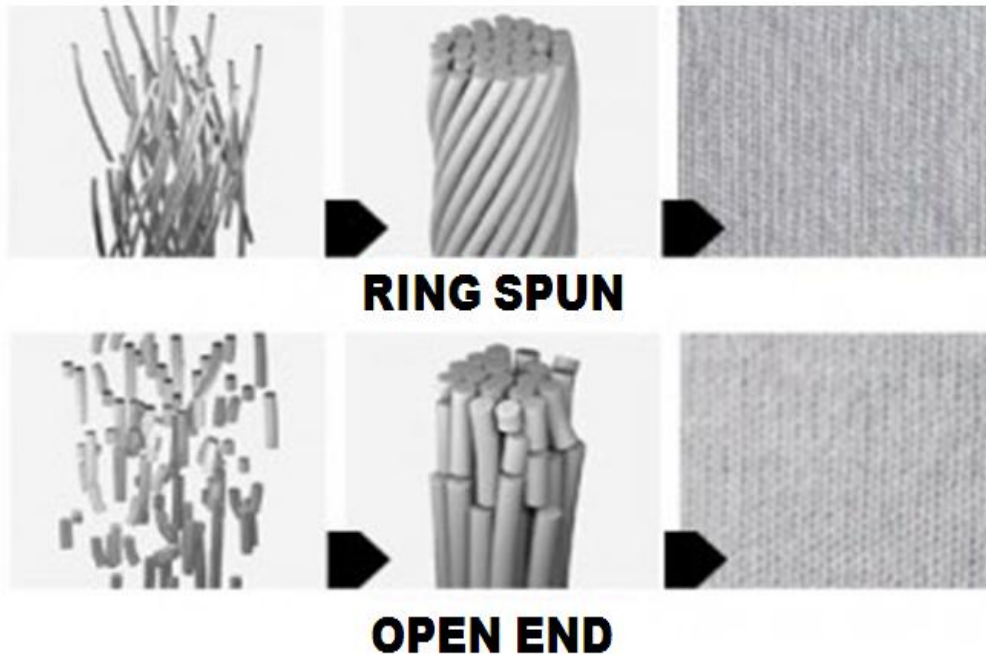
Strengthening tape has meaning especially for construction of t-shirts. It stabilizes t-shirt's shape and protects from frying, which can arise in use of the t-shirt. Arm-to-arm tape is especially advised for heavier usage like working purposes.

QUALITY OF T-SHIRTS



Yarn or thread?

It is another question, that has an impact on price and quality. Some of producers seam t-shirts with yarn. In this case stitch is loose and ease to be damaged. Other producers (*Promostars*) use thread to seam and it makes the stitch harder, denser and more durable.



Composition of fabric. Most of t-shirts are made of cotton. Type of cotton is not meaningless. There are two types of cotton yarn: ring-spun (smooth, purified, better brushed) and open- end (rough, made of shorter pieces). The difference can be seen with a naked eye, but also during printing- "open end" emits dust. All *Promostars* t-shirts are made of ring spun type of cotton.

QUALITY OF T-SHIRTS



Good saturating and long lasting color is significant feature of a t-shirt. Gaining this effect requires special coloring ingredients, which come into reaction with yarn. Such solution makes the color durable and filled (*Promostars*). Also basic white color can vary widely between other producers. The difference between optic white (*Promostars*) and white which looks grey or beige is huge.



Last process which is important to improve quality of t-shirt is enzyme washing. This phase of production cleans t-shirt from all of impurities and makes the garment softer and smoother. All *Promostars* t-shirts production is finished with enzyme washing.

"Quality is remembered long after the price is forgotten."

-Gucci